

# Texas Longhorns Australia Breed Standard

**Horns: Cows** – Wide & twisted outward measuring 60” or more Tip to Tip at maturity.  
**Bulls** – Lateral length with slight forward or Upward sweep measuring 60” or more at maturity.

**Back:** Strong, Straight topline with maximum length from shoulders to hooks.

**Loin:** Broad & Full.

**Hindquarter:**  
Long, Slightly sloping from hooks to pins. Full & Well Developed.

**Tail:**  
Long with full switch.

**Udder:** Well attached, equal quarters with small pigmented teats.

**Underline:** Clean & tidy, without excessive navel.

**Legs/Feet:** Squarely set, sound feet, legs, hocks & joints with abundant bone. Hard small hooves.

## General Type:

Good length with moderate depth & thickness. Strong & Square. Mild & Tractable Disposition. Every colour of the rainbow, flamboyant & loud. Cows should reach puberty early and have regular calving. Should produce adequate milk to raise a fat calf.

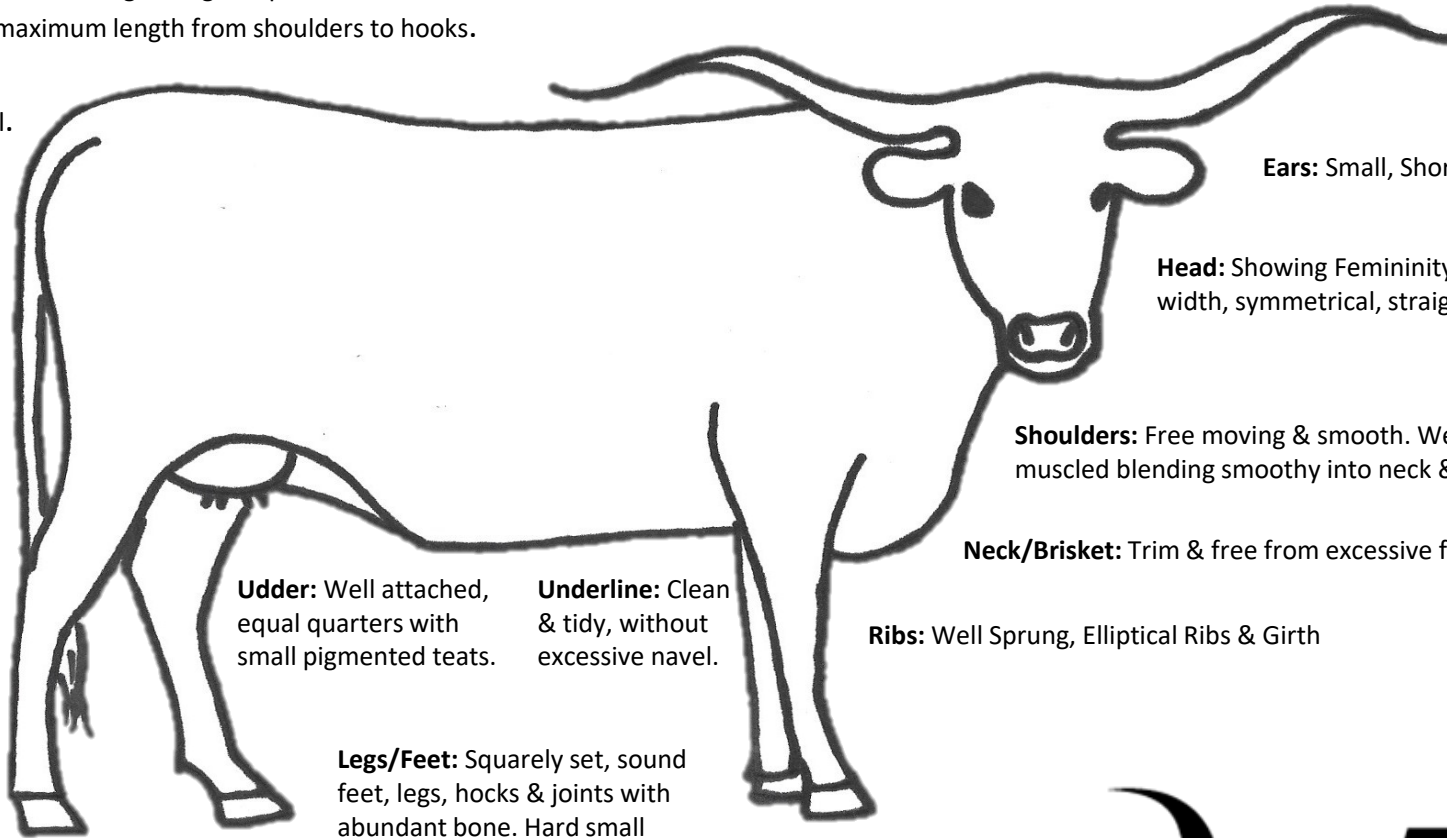
**Ears:** Small, Short Round Ears.

**Head:** Showing Femininity. Moderate width, symmetrical, straight profile.

**Shoulders:** Free moving & smooth. Well muscled blending smoothly into neck & ribs.

**Neck/Brisket:** Trim & free from excessive fleshing.

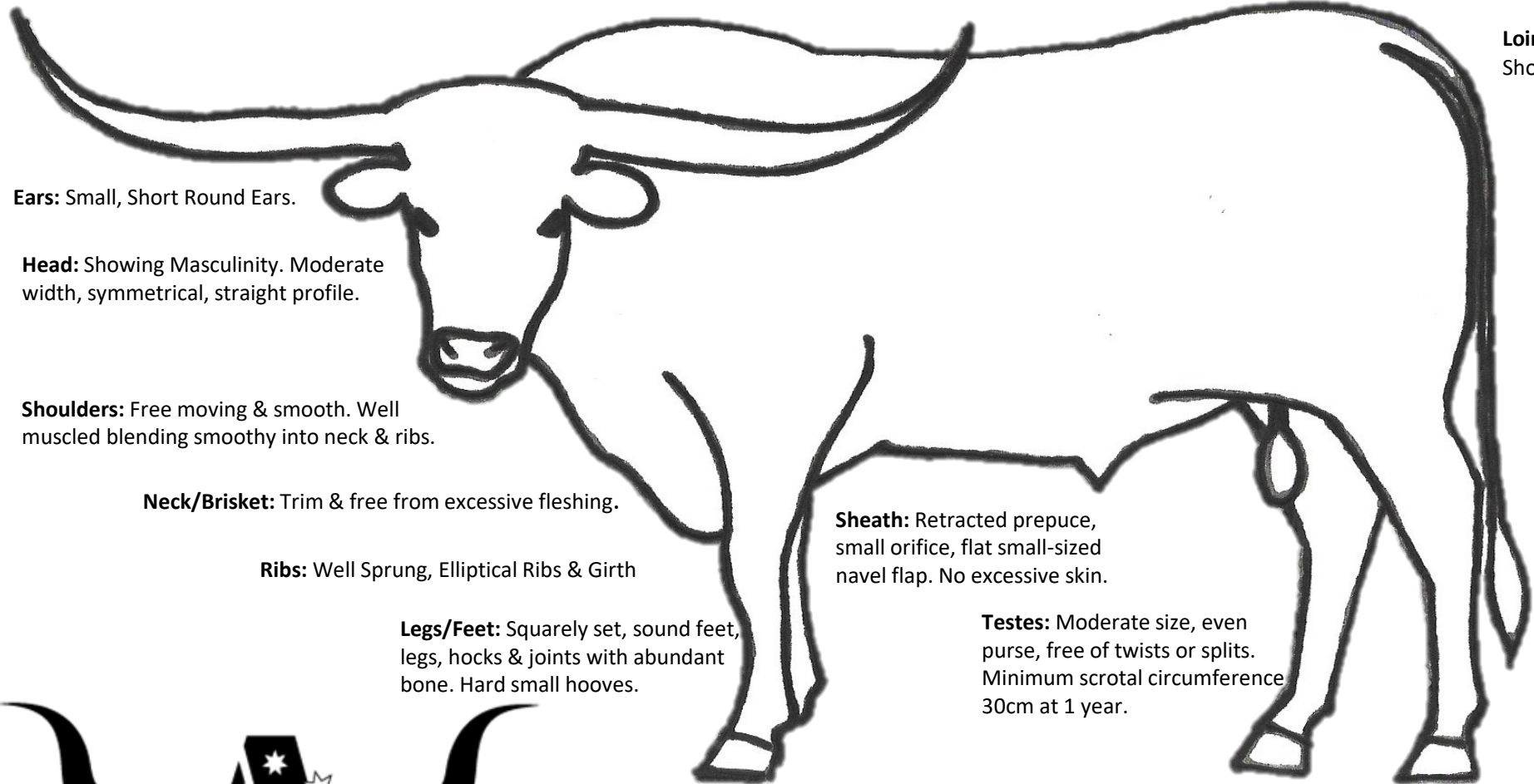
**Ribs:** Well Sprung, Elliptical Ribs & Girth



# Texas Longhorns Australia Breed Standard

**Horns: Bulls** – Lateral length with slight forward or Upward sweep measuring 60” or more at maturity.

**Back:** Strong, Straight topline with maximum length from shoulders to hooks.



**Ears:** Small, Short Round Ears.

**Head:** Showing Masculinity. Moderate width, symmetrical, straight profile.

**Shoulders:** Free moving & smooth. Well muscled blending smoothly into neck & ribs.

**Neck/Brisket:** Trim & free from excessive fleshing.

**Ribs:** Well Sprung, Elliptical Ribs & Girth

**Legs/Feet:** Squarely set, sound feet, legs, hocks & joints with abundant bone. Hard small hooves.

**Sheath:** Retracted prepuce, small orifice, flat small-sized navel flap. No excessive skin.

**Testes:** Moderate size, even purse, free of twists or splits. Minimum scrotal circumference 30cm at 1 year.

**Loin:** Broad & Full. Showing thickness.

**Hindquarter:** Long, Slightly sloping from hooks to pins. Full & Well Developed.

**Tail:** Long with full switch.

## General Type:

Good length with moderate depth & thickness. Strong & Square. Bulls thicker, taller and more heavily muscled than cows. Bulls should exhibit masculine crest at maturity. Mild & Tractable Disposition. Every colour of the rainbow, flamboyant & loud. Bulls should be virile with a high libido and have high quality semen in volume.



TEXAS LONGHORNS AUSTRALIA INC.